

# Colombo Consumer Price Index (CCPI)-(BASE 2021=100)

## February 2024

29-02-2024

Department of Census and Statistics

Ministry of Finance, Economic Stabilization and National policies

The Department of Census and Statistics (DCS) is the authorized agency to compile Colombo Consumer Price Index (CCPI). Following internationally accepted guidelines, it has been arranged to revise the base year from 2013=100 to 2021=100 in order to accommodate the changing expenditure patterns and in cooperate changes of goods & services available in the market. Accordingly, with respect to the new base, CCPI (Base 2021=100) will be released monthly commencing from February 2023 on the last working day of each month. It is emphasized that index numbers or inflation figures compiled under different base years cannot be compared.

The CCPI is compiled to indicate average changes in the prices of goods and services purchased by households in urban areas of Colombo district. The price collection of the index (Base 2021=100) has covered 10 price collection centers in Peliyagoda, Maradana, Wellawatta, Dematagoda Grandpass, Kirulapone, Nugegoda, Rathmalana, and two Dedicated Economic Centers namely Narahenpita and Rathmalana.

Prices are collected weekly from the outlets located within each of the above market areas including Sathosa and a supermarket. The consumer basket includes 426 items, which represent the typical urban household consumption expenditure. The CPI weights are derived from the Household Income and Expenditure Survey (HIES) 2019.

- ▢ The CCPI for all items for the month of February 2024 was 200.6 and it records a decrease of 0.1 in index points compared to January 2024
- ▢ The overall rate of inflation as measured by CCPI on Y-on-Y basis is 5.9% in February 2024

### Content

01. Variations in Colombo Consumer Price Index (Page 1)
02. Inflation:(Page 5)

[Source Publication](#) For more details on the revision of base year, please click here: [Technical Note on Base Year Revision](#)

## 1. Variations in Colombo Consumer Price Index

Month on month changes in the Colombo Consumer Price Index is briefly described below.

**Table 1- Monthly Changes by main Groups of Market Basket**

Major Group*	Index Number		Monthly Changes of the Expenditure Values (Rs.)			Monthly Changes of the Index (%) <sup>1</sup>			
	Feb. 2023	Jan. 2024	Feb. 2024	Feb. 2023	Jan. 2024	Feb. 2024	Feb. 2023	Jan. 2024	Feb. 2024
	All Items	189.5	200.7	200.6	807.80	5152.79	-92.52	0.47	2.87
Food and Non Alcoholic Beverages	234.7	247.9	242.8	-1278.93	2174.47	-1230.64	-0.74	1.21	-0.67
Non Food	173.4	183.9	185.6	2086.73	2978.32	1138.13	1.20	1.66	0.62
Alcoholic beverages	182.8	221.2	232.6	60.25	263.00	174.45	0.03	0.15	0.09
Tobacco and Narcotic	235.1	242.1	239.3	194.05	110.21	-57.03	0.11	0.06	-0.03
Clothing and Foot Wear	137.1	157.8	158.7	1341.07	934.59	243.92	0.77	0.52	0.13
Housing, Water, Electricity, Gas and Other Fuels	187.9	185.6	187.0	9.32	95.69	46.49	0.01	0.05	0.03
Furnishing Household Equipment and Routine Household Maintenance	241.7	234.9	239.5	408.36	841.16	529.58	0.24	0.47	0.29
Transport	119.8	123.4	124.2	1.31	97.50	22.22	0.00	0.05	0.01
Communication	171.7	179.1	180.0	83.91	100.98	16.18	0.05	0.06	0.01
Recreation and Culture	155.2	169.3	172.4	21.41	125.25	143.61	0.01	0.07	0.08
Education	184.0	187.4	187.8	-52.39	44.07	12.46	-0.03	0.02	0.01
Miscellaneous Goods and Services	207.6	210.2	210.2	19.44	365.86	6.26	0.01	0.20	0.00
Other									

Note 1: There are 12 main groups of the market basket. Significant changes in February 2024 were noted in Ten main groups, details on which are given in Table 2.

Note 2: Monthly change of the index (%) is calculated using expenditure values.

Note 3: <sup>1</sup> Percentage of items does not tally with overall percentage due to rounding off.

### 1.1 Month on Month (M on M) Change of CCPI:

The CCPI for all items for the month of February 2024 was 200.6 and it records a decrease of 0.1 index points that is 0.05 percentage change compared to the month of January 2024 for which the index was 200.7. This represents a decrease in expenditure value by Rs 92.52 in the "Market Basket".

#### 1.1.1 Contribution to M on M Changes:

Contributions to the change in CCPI from January 2024 to February 2024 are given in Table 02. The month-on-month change was contributed by a decrease in Food items by 0.67% and an increase in Non Food items by 0.62% respectively.

#### 1.1.2 Contribution of Food and Non-Alcoholic Beverages items: -0.67%

As shown in Table 02, decreases in value change were reported for Fresh fish (0.23%), Big Onions (0.11%), Green chilies (0.11%), Red Onions (0.07%), Limes (0.06%), Vegetables (0.04%), Fresh fruit (0.04%), Chicken (0.02%), Milk powder (0.02%), Sugar (0.02%), Turmeric powder (0.01%), Coconut oil (0.01%), Potatoes (0.01%), Chili Powder (0.01%), Dried Chillies (0.01%) and Tea Dust/Leaves (0.01%).

While increases in value change were reported for Eggs (0.06%), Yoghurt (0.02%), Rice (0.01%), Fresh Milk (0.01%), Curd (0.01%) and Fruit Drinks/Cordials (0.01%).

### 1.1.3 Contribution of Non-Food items: 0.62%

Among Non-Food groups, increases in value change were reported for the groups of 'Transport' (0.29%), 'Housing, Water, Electricity, Gas and Other Fuels' (0.13%), 'Alcoholic beverages Tobacco and Narcotic' (0.09%), 'Education' (0.08%), 'Furnishing Household Equipment and Routine Household Maintenance' (0.03%), 'Communication' (0.01%), 'Recreation and Culture' (0.01%) and 'Miscellaneous Goods and Services' (0.01%). While decreases in value change was reported for the group of 'Clothing and Footwear' (0.03%) and a very slight price increase was reported in the group of 'Health'. Meanwhile, the price index of 'Restaurant and Hotels' remained unchanged during the month.

**Table 02: Contribution to the change in CCPI from January 2024 to February 2024  
(Base2021=100)**

Food	Value Change			
	Rs.Cts.	% change		
		Increase	Decrease	Net effect
<b>Food</b>	<b>-1230.64</b>	<b>0.12</b>	<b>0.79</b>	<b>-0.67</b>
1 Rice	17.94	0.01		
<i>Rice - (Kekulu - red)</i>	-23.69		0.01	
<i>Rice - (Samba)</i>	51.20	0.03		
2 Chicken	-35.85		0.02	
3 Fresh Fish	-420.70		0.23	
4 Fresh milk	14.15	0.01		
5 Milk powder	-33.23		0.02	
6 Yoghurt	39.77	0.02		
7 Curd	26.99	0.01		
8 Eggs	108.07	0.06		
9 Coconut oil	-17.74		0.01	
10 Fresh Fruits	-73.10		0.04	
<i>Banana</i>	-147.57		0.08	
<i>Papaw</i>	-42.99		0.02	
<i>Water Melon</i>	60.69	0.03		
11 Vegetables	-79.55		0.04	
12 Potatoes	-21.81		0.01	
13 Red onions	-119.99		0.07	
14 Big onions	-205.85		0.11	
15 Green chilies	-205.86		0.11	
16 Sugar	-31.17		0.02	
17 Chili powder	-22.06		0.01	
18 Dried chilies	-19.40		0.01	
19 Turmeric powder	-20.71		0.01	
20 Limes	-106.20		0.06	
21 Tea dust/ leaves	-20.54		0.01	
22 Fruit drinks/ Cordials	15.60	0.01		
23 Other	-19.39		0.01	

<b>Non Food</b>		<b>1138.13</b>	<b>0.65</b>	<b>0.03</b>	<b>0.62</b>
24	Alcoholic beverages Tobacco and Narcotic	174.45	0.09		
	<i>Arrack</i>	30.31	0.02		
	<i>Whiskey</i>	53.77	0.03		
	<i>Cigarettes</i>	45.27	0.02		
	<i>Beetle leaves</i>	22.65	0.01		
	<i>Arecanuts</i>	9.88	0.01		
25	Clothing and Foot Wear	-57.03		0.03	
26	Housing, Water, Electricity, Gas and Other Fuels	243.92	0.13		
	<i>Maintenance/ Reconstruction</i>	22.34	0.01		
	<i>Water bills</i>	18.84	0.01		
	<i>L. P. Gas</i>	180.83	0.10		
	<i>Kerosene oil</i>	21.91	0.01		
27	Furnishing Household Equipment and Routine Household Maintenance	46.49	0.03		
	<i>Energy saving bulbs</i>	37.60	0.02		
28	Transport	529.58	0.29		
	<i>Bicycles</i>	10.07	0.01		
	<i>Petrol</i>	199.71	0.11		
	<i>Diesel</i>	33.55	0.02		
	<i>Vehicle maintenance expenses (Repair charges)</i>	201.39	0.11		
29	Communication	22.22	0.01		
	<i>Telephone charges - mobile</i>	12.28	0.01		
30	Recreation and Culture	16.18	0.01		
31	Education	143.61	0.08		
	<i>Course fees (Higher education)</i>	143.61	0.08		
32	Miscellaneous Goods and Services	12.46	0.01		
33	Others	6.26	0.00		
	<b>All Items</b>	<b>-92.52</b>	<b>0.77</b>	<b>0.82</b>	<b>-0.05</b>

\*Percentages of items do not tally with overall percentage due to rounding off.

## 2. Inflation

The CCPI is an economic indicator constructed to measure inflation which is defined as percentage change in CCPI over the year. There are two measures of inflation in general use. One measure is Year on Year base or Point to Point inflation (The percentage change in the CPI during the last 12 months). The other measure is Moving Average Inflation (The percentage difference between the average Price Index of last 12 months & the average Price Index of previous 12 months).

**Table 03: Movements of the CCPI (Base: 2021=100)**

Year	Month	All Item				Food				Non Food			
		Index Number	% Change Month on Month	Inflation %		Index Number	% Change Month on Month	Inflation %		Index Number	% Change Month on Month	Inflation %	
				Y on Y	12 Month Moving Avg.			Y on Y	12 Month Moving Avg.			Y on Y	12 Month Moving Avg.
2023	February	189.5	0.5	50.6	234.7	-2.2	54.4	173.4	1.8	48.8			
	March	195.0	2.9	50.3	229.0	-2.4	47.6	183.0	5.5	51.7			
	April	192.3	-1.4	35.3	228.8	-0.1	30.6	179.3	-2.0	37.6			
	May	192.3	0.0	25.2	232.7	1.7	21.5	177.9	-0.8	27.0			
	June	192.3	0.0	12.0	235.7	1.3	4.1	176.9	-0.6	16.2			
	July	190.2	-1.1	6.3	235.8	0.0	-1.4	173.9	-1.7	10.5			
	August	190.1	-0.1	4.0	232.8	-1.3	-4.8	174.9	0.6	8.7			
	September	191.8	0.9	1.3	234.1	0.6	-5.2	176.7	1.0	4.7			
	October	191.4	-0.2	1.5	229.5	-2.0	-5.2	177.8	0.6	4.9			
	November	193.4	1.0	3.4	230.3	0.3	-3.6	180.2	1.3	6.8			
	December	195.1	0.9	4.0	238.9	3.7	0.3	179.5	-0.4	5.8	20.0		
	2024	January	200.7	2.9	6.4	247.9	3.8	3.3	183.9	2.5	7.9	17.1	
February		200.6	0.0	5.9	242.8	-2.1	3.5	185.6	0.9	7.0	14.2		

Note: Year on Year inflation, 12 Month Moving Average inflation and Month on Month change were calculated using the rounding off index numbers

### 2.1 Year on Year (Y-on-Y) Inflation

The overall rate of inflation as measured by the CCPI on Y-on-Y basis is 5.9% in February 2024 and Y-on-Y inflation calculated for the month of January 2024 was 6.4% (Table 3). The Y-on-Y inflation of Food Group increased to 3.5% in February 2024 from 3.3% in January 2024 and the Y-on-Y inflation of Non Food Group decrease to 7.0% in February 2024 from 7.9% in January 2024.

### 2.2 Contribution to Y on Y inflation:

For the month of February 2024, on Y-on-Y basis, contribution to inflation by food commodities was 1.13%.

The contribution of Non Food items was 4.74%. This was mainly due to price increases in groups of items 'Housing, Water, Electricity, Gas and Other Fuels' (3.6%), 'Education' (0.46%), 'Alcoholic beverages Tobacco and Narcotic' (0.44%), 'Restaurants & Hotels' (0.12%), 'Recreation and Culture' (0.09%), 'Communication' (0.07%), 'Miscellaneous Goods and Services' (0.06%), 'Clothing and Footwear' (0.05%), and Health' (0.01%). While decreases in value change were reported for the groups of 'Furnishing Household Equipment and Routine Household Maintenance' (0.01%) and Transport' (0.14%).

**Table 04: Contribution to the increase in CCPI from February 2023 February 2024  
(Base 2021=100)**

Sub Group/Commodity	Value	Increase	Decrease	Net
	Change			
	Rs.Cts.	%	%	%
<b>Food and Non Alcoholic Beverages</b>	<b>1966.95</b>	<b>2.51</b>	<b>1.38</b>	<b>1.13</b>
Rice	500.18	0.29		
Wheat flour	-40.90		0.02	
Bread (Normal)	-338.17		0.19	
Chicken	-190.68		0.11	
Sea fish	-419.41		0.24	
Dried Fish	-138.10		0.08	
Canned fish	-38.05		0.02	
Milk powder	-569.14		0.33	
Eggs	232.27	0.13		
Coconuts	-17.20		0.01	
Coconut oil	-200.81		0.12	
Fresh Fruits	-128.58		0.07	
Vegetable	2205.84	1.27		
Dhal Mysoor	-119.91		0.07	
Big Onions	912.58	0.52		
Sugar	237.58	0.14		
Dried chillies	-197.42		0.11	
Tea dust/ leaves	110.49	0.06		
<b>Non Food</b>	<b>8247.49</b>	<b>4.89</b>	<b>0.16</b>	<b>4.74</b>
Alcoholic beverages Tobacco and Narcotic	763.89	0.44		
<i>Arrack</i>	273.44	0.16		
<i>Whiskey</i>	115.54	0.07		
<i>Beer</i>	31.13	0.02		
<i>Cigarettes</i>	362.16	0.21		
Clothing and Footwear	83.62	0.05		
Housing, Water, Electricity, Gas and Other Fuels	6267.97	3.60		
<i>Maintenance/ Reconstruction</i>	-260.55		0.15	
<i>Water bills</i>	1533.67	0.88		
<i>Electricity bill</i>	4884.13	2.81		
<i>L. P. Gas</i>	-232.69		0.13	
<i>Kerosene oil</i>	-130.16		0.07	
Furnishing Household Equipment and Routine Household Maintenance	-25.97		0.01	
Health	12.49	0.01		
<i>Purchase of medical/ pharmacy products</i>	-97.49		0.06	
<i>Consultation fees to specialists</i>	84.51	0.05		
Transport	-246.44		0.14	
<i>Petrol</i>	-445.88		0.26	
<i>Diesel</i>	-117.16		0.07	
Communication	119.73	0.07		
Recreation and Culture	150.00	0.09		
Education	802.00	0.46		
Restaurant and hotels	210.28	0.12		
Miscellaneous Goods and Services	109.91	0.06		
<b>All Items</b>	<b>10214.44</b>	<b>7.40</b>	<b>1.53</b>	<b>5.87</b>

\*Percentages of items do not tally with overall percentage due to rounding off.

### Movements in the CCPI (Base 2021=100) for Head Line, Food, Non Food and Year on Year Inflation

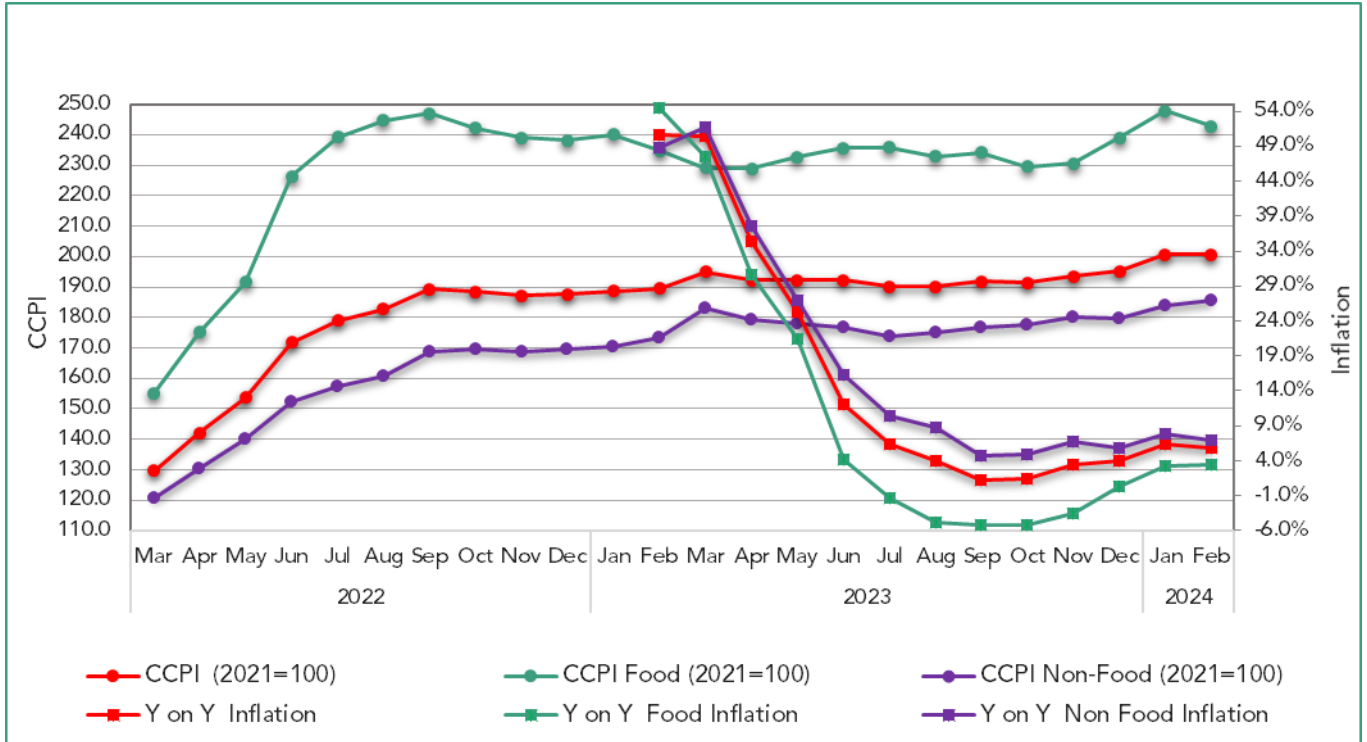


Table 05: Monthly average open market retail prices of selected items of Colombo Consumer Price Index February 2023, January &amp; February 2024

Item	Unit	Retail Prices (Rs. Cts)			Retail Price Changes (%)	
		2023 Feb.	2024 Jan.	2024 Feb.	Feb. 24/ Feb. 23	Feb. 24 / Jan. 24
1. Rice– Kekulu – Red	Kg	203.95	200.25	196.70	-3.55	-1.77
2. Rice– Kekulu – White	Kg	194.22	211.56	210.62	8.44	-0.45
3. Rice –Nadu - White	Kg	203.91	219.50	218.90	7.35	-0.27
4. Rice –Nadu - Red	Kg	234.18	221.24	220.95	-5.65	-0.13
5. Rice– Samba	Kg	225.42	242.74	248.51	10.24	2.38
6. Cowpea	Kg	1324.44	1267.04	1233.66	-6.85	-2.63
7.Green Grams	Kg	1407.67	1143.84	1151.19	-18.22	0.64
8. Coconut	Each	109.98	109.51	109.18	-0.73	-0.30
9. Coconut Oil	750ml	539.66	458.53	450.67	-16.49	-1.71
10.Chicken	Kg	1283.98	1216.56	1200.95	-6.47	-1.28
11. Eggs	Each	45.73	52.10	57.65	26.08	10.65
12. Red Onion	Kg	530.66	583.04	427.74	-19.39	-26.64
13. Big Onion	Kg	164.74	481.32	423.05	156.80	-12.11
14. Potatoes	Kg	258.05	282.93	272.73	5.69	-3.60
15. Garlic	Kg	529.12	657.33	666.05	25.88	1.33
16. Dried Chilies	Kg	1654.57	1277.36	1236.24	-25.28	-3.22
17. Green Chilies	Kg	520.68	1625.85	1256.68	141.35	-22.71
18. Sugar	Kg	229.77	302.43	294.00	27.95	-2.79
19. Pepper	Kg	2665.72	2854.27	2812.22	5.50	-1.47
<b>Vegetables-</b>						
20. Ash Plantain	Kg	325.78	433.96	467.26	43.43	7.67
21. Carrot	Kg	271.08	1014.35	945.37	248.74	-6.80
22. Snake Gourd	Kg	326.39	426.00	465.04	42.48	9.16
23. Tomatoes	Kg	314.65	660.87	921.51	192.86	39.44
24. Capsicum	Kg	872.65	903.25	1137.72	30.37	25.96
25. Beetroot	Kg	330.55	836.49	647.48	95.88	-22.60
26. Beans	Kg	518.27	798.16	808.23	55.95	1.26
<b>Fruits</b>						
27. Banana	Kg	312.50	326.06	291.76	-6.64	-10.52
28. Papaw	Kg	327.22	273.49	254.37	-22.26	-6.99
29. Mangoes	Each	232.45	127.64	155.15	-33.26	21.55
<b>Fresh Fish –</b>						
30. Seer	Kg	3407.66	3690.12	3307.09	-2.95	-10.38
31.Talapath	Kg	2592.09	2747.79	2672.18	3.09	-2.75
32.Paraw	Kg	2412.27	2392.74	2237.72	-7.24	-6.48
<b>Dried Fish -</b>						
33.Katta	Kg	2513.86	2237.10	2232.52	-11.19	-0.20
34. Sprats	Kg	1367.57	1359.03	1331.71	-2.62	-2.01
<b>Fuel -</b>						
35. Kerosene Oil	Lt	355.00	238.75	255.50	-28.03	7.02
36 .Petrol (CPC & IOC)	Lt	389.29	361.00	369.75	-5.02	2.42
37. Diesel (CPC & IOC)	Lt	405.00	350.75	361.75	-10.68	3.14
38. Gas- Avg.	12.5kg	4725.21	4098.39	4372.49	-7.46	6.69
Litro	12.5kg	4576.00	3956.42	4249.99	-7.12	7.42
Laughs	12.5kg	5172.86	4524.29	4740.00	-8.37	4.77




### The Vision of DCS





“To be the leader in the region in producing timely statistical information to achieve the country’s development goals.”

### The Mission of DCS

“Making contribution in the socioeconomic development of the country by providing accurate timely statistics, more Effectively by means of new technology, and utilising the services of dedicated staff under a strategic leadership to become a prosperous nation in the globalised environment.”

---

 **Department of Census & Statistics,  
Sankyana Mandiraya  
No. 306/71,Polduwa  
Road,Battaramulla**

 [info@statistics.gov.lk](mailto:info@statistics.gov.lk)  
 +94 11 2147000  
 +94 11 2147011  
 [statistics.gov.lk](http://statistics.gov.lk)

**This publication is produced by the Prices and Wages Division**

 **5<sup>th</sup> floor, Department of Census and Statistics**  
 [prices@statistics.gov.lk](mailto:prices@statistics.gov.lk)  
 **+94 11 2147414**  **+94 11 2877945**